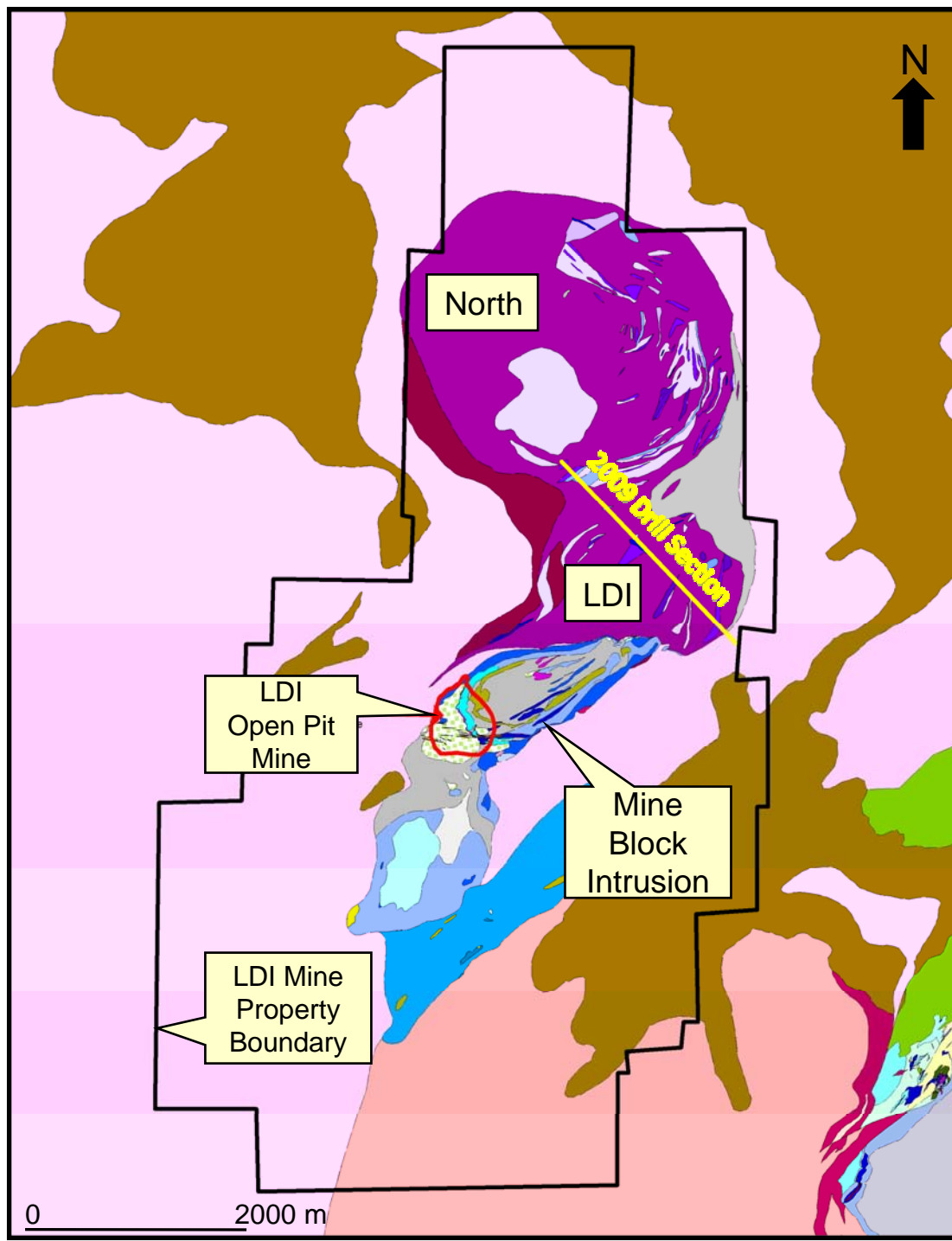
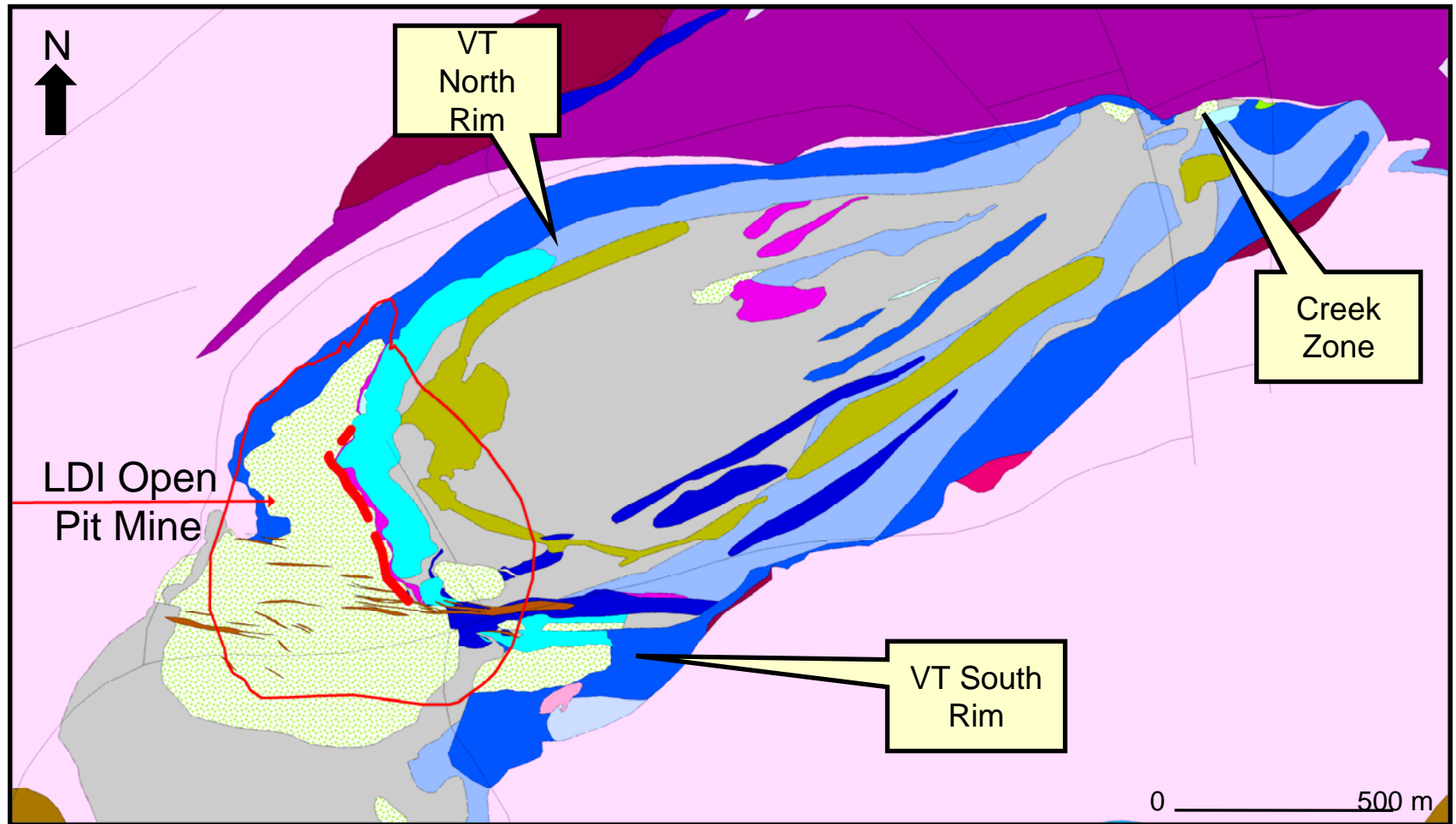


Geological Map of the LDI Mine Property (21,000 acres)



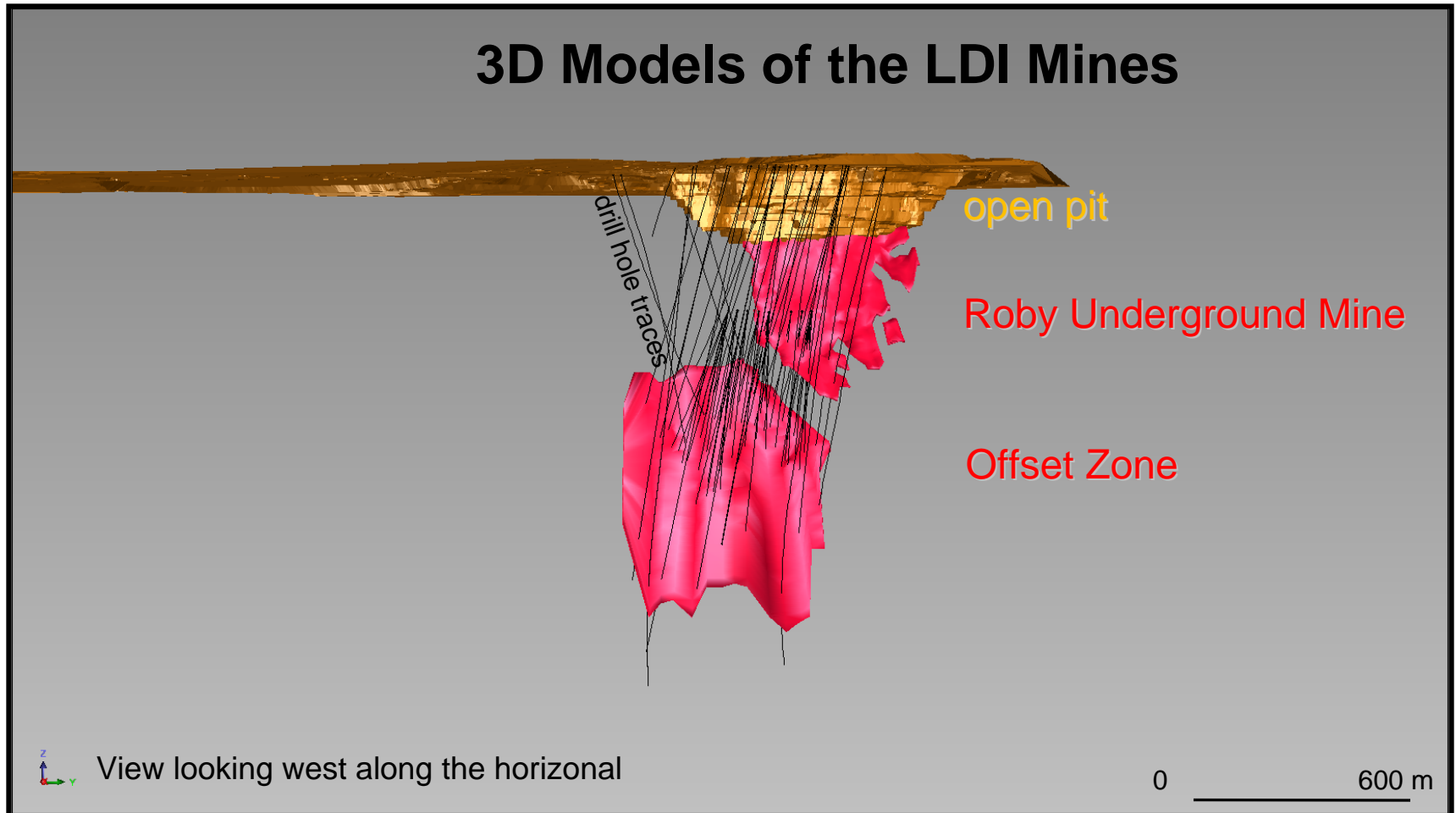
Location of the planned exploration drill section in the North LDI area of the LDI Mine Property

Geological Map of the LDI Mine Block Intrusion



- Location of surface exploration programs planned for the Mine Block Intrusion in 2009.
- The Roby Underground Mine is located below the LDI Open Pit Mine.

LDI Underground and Open Pit Mines



Location of the Offset Zone relative to the Roby Underground Mine and the LDI Open Pit